

### New Clinical Lead for PiP Dr Tim Horsburgh

**We are delighted to announce that Dr Tim Horsburgh has been appointed; he started in post on April 13th.**

Tim is Clinical Lead for Children's and Young People's Commissioning at Dudley CCG.



He has a wide range of experience in both the commissioning of services for children and young people and in community service delivery. He is currently developing a paediatric triage project - a collaboration between local primary and secondary services – and an integrated complex care team for the support of children with long - term health problems and life - limiting conditions.

He is leading on work in engaging children & young people in the commissioning of services and in developing the role of Young Health Champions in the Dudley borough – following the success of the 'MeFestival' held last year.

He has worked collaboratively with colleagues from the Black Country Partnership NHSFT, to redesign health visitor services into localities and he understands the cultural barriers to service change.

**Dr Hesham Abdalla**, Consultant Paediatrician, and member of the interview panel said, *"Tim will be a great asset to the organisation and enable it to become a key player in what is an increasingly complex and inter-connected health care economy"*.

**Tim says:** *"I am really excited to be offered the role of Clinical Lead for PiP and to carry on the great work that Kathy Bailey has done for us as Clinical Lead over the past years."*

*My main areas of interest are in developing whole - system, integrated care pathways for children and young people with problems, very much taking a seamless approach, involving both their physical and mental health needs. Maintaining young people within their own family, social and community networks and enabling them to attain their maximum education potential, to enhance their emotional resilience and self - esteem, should be the goals of us all in health and social care provision.*

*An integrated, holistic approach to health care provision, guided by what the young people tell us they need, will be my guiding principle in any service developments, even in these difficult fiscal times.*

*I look forward to meeting and working with all our current members and will be striving to further involve commissioning and public health colleagues to enhance our ability to make inroads into the deep - seated health inequalities that still damage the young people within our society as so clearly stated by Marmot".*

#### PiP Member Organisations

Birmingham Children's Hospital NHS FT • Black Country Partnership NHS FT • Burton Hospitals NHS FT • County Hospital, Stafford • Dudley CCG  
Dudley Group NHS FT East Cheshire NHS Trust • George Eliot Hospital NHS Trust • Heart of England NHS FT  
Robert Jones & Agnes Hunt Orthopaedic & District Hospital NHS FT • Shropshire Community NHS Trust • Shropshire CCG  
South Staffordshire & Shropshire Healthcare NHS FT • The Royal Wolverhampton Hospitals NHS Trust • The Shrewsbury & Telford Hospital NHS Trust  
University Hospital of North Staffordshire NHS Trust • University Hospitals Coventry & Warwickshire NHS Trust •  
Walsall Healthcare NHS Trust • Worcestershire Acute Hospitals NHS Trust



## Interviews for post of Clinical Lead were held on Friday, 27th March 2015

### Members of the Interview Panel were:

- Dr Hesham Abdalla, Consultant Paediatrician at George Eliot Hospital, Nuneaton**  
**Professor Steve Cropper**, Academic Adviser, PiP and Professor at the School of Public Policy & Professional Practice, Keele University  
**Mrs Julia Greensall**, Project Manager - PiP  
**Miss Leigh Ann Hampton**, Young Health Champion, Shropshire CCG  
**Dr Jonathan Howell**, Consultant in Public Health, Specialised Commissioning - NHS England  
**Dr Liz Nicholson**, Chair - PiP

We were particularly pleased that Leigh Ann Hampton was a member of the Panel. Leigh Ann is a student at Shropshire College and participated in the interviews while on a two week placement with Karen Higgins, Project Manager with the Shropshire Young Health Champions.

Leigh Ann showed a great deal of insight and brought an interesting dimension to the interview process. She certainly kept both candidates and interviewers on their toes!

**Leigh Ann said:** " I really enjoyed the process and it gave me a new perspective. We recently talked about interviewing at College, so I was able to relate my experience. The whole experience will be very helpful in the future".

We would like to thank all panel members for their support and participation in the interviews.



Liz Nicholson with Leigh Ann Hampton

## Paediatric Anaesthetic Network Study Day

held on Friday, 27th February 2015

Members of the PAN organise an annual Study Day, aimed at the Anaesthetist working in a District General Hospital.

There were several presentations, with a great range of topics covered:

- \*MRI services in the DGH; the good, the bad & the ugly - **Abigail Akita** (Consultant Anaesthetist at Royal Wolverhampton)
- \* Management of the fitting child in the DGH - **Neil Crooks** (Consultant in Anaesthesia & Intensive Care, HeFT)
- \* Anaesthesia and Neurotoxicity - **Reema Nandi**, Consultant Anaesthetist, Great Ormond Street Hospital
- \* Tips and Tricks anaesthetising children, **Maggie Babb**, Consultant Anaesthetist, UHNM
- \* How to keep up to date, **Simon Crighton**, South Warwickshire NHS FT

There were also a number of Clinical case presentations and the Joint Clinical Leads for the General Paediatric Surgery project - **Oli Gee and Doug Bowley** - attended to give an update on the progress of the Surgery project.

The Study Days provide an excellent opportunity for paediatric CPD and for anaesthetists to meet colleagues from other organisations to discuss issues and share experiences. The event was approved for 5 CPD points.

**There were 90 delegates and the feedback from the day was excellent.**

**The next PAN Study Day will be held in February 2016**

**Date to be confirmed**

### PiP Member Organisations

Birmingham Children's Hospital NHS FT • Black Country Partnership NHS FT • Burton Hospitals NHS FT • County Hospital, Stafford • Dudley CCG  
Dudley Group NHS FT East Cheshire NHS Trust • George Eliot Hospital NHS Trust • Heart of England NHS FT  
Robert Jones & Agnes Hunt Orthopaedic & District Hospital NHS FT • Shropshire Community NHS Trust • Shropshire CCG  
South Staffordshire & Shropshire Healthcare NHS FT • The Royal Wolverhampton Hospitals NHS Trust • The Shrewsbury & Telford Hospital NHS Trust  
University Hospital of North Staffordshire NHS Trust • University Hospitals Coventry & Warwickshire NHS Trust •  
Walsall Healthcare NHS Trust • Worcestershire Acute Hospitals NHS Trust

## General Paediatric Surgery (GPS)

**PiP and Birmingham Children's Hospital (BCH) received joint funding to progress the work around GPS services.** The project aims to create a defined framework for a credible & sustainable managed clinical network for GPS & urology across the West Midlands.

### The joint Clinical Leads are:

Mr Oli Gee, Paediatric Surgeon at BCH and Mr Doug Bowley, Consultant Surgeon at Heart of England NHS FT.

The Clinical Leads are developing Standards (based on the RCS document), preparing for Providers to undertake a 'self-assessment' against the Standards.

**Following from the first CPD event** held on 20th November 2014, the **second CPD event** is scheduled to take place on Thursday, May 21st.

**For more information** - please contact **Lesley Hines**.

## Paediatric Anaesthetic Network (PAN)

**The PAN was established in 2003 - to address the issues relating to the safe delivery of paediatric anaesthetic services.**

The Lead Paediatric Anaesthetist from each Trust (Including those not members of PiP) across the region attends the meetings.

In addition to their annual Study Day, the network meets three times a year.

The network provides a forum for paediatric anaesthetists to share issues and problems with colleagues from both specialist and non-specialist units.

The network is co-chaired by **Dr Rob Alcock**, Consultant Anaesthetist at Robert Jones & Agnes Hunt NHS Trust (Oswestry), and **Dr Richard Crombie**, Consultant Anaesthetist at Heart of England NHS FT.

**The next meeting is taking place on Thursday, 14th May (9.30 am to 12.30 pm) - at the PGMC, County Hospital, Stafford.**

### Photos from the PAN Study Day



Neil Crooks



Alison Thwaites (left) and Maggie Babb



Nuala Bywater, Rob Alcock and Richard Crombie

### PiP Member Organisations

Birmingham Children's Hospital NHS FT • Black Country Partnership NHS FT • Burton Hospitals NHS FT • County Hospital, Stafford • Dudley CCG  
 Dudley Group NHS FT East Cheshire NHS Trust • George Eliot Hospital NHS Trust • Heart of England NHS FT  
 Robert Jones & Agnes Hunt Orthopaedic & District Hospital NHS FT • Shropshire Community NHS Trust • Shropshire CCG  
 South Staffordshire & Shropshire Healthcare NHS FT • The Royal Wolverhampton Hospitals NHS Trust • The Shrewsbury & Telford Hospital NHS Trust  
 University Hospital of North Staffordshire NHS Trust • University Hospitals Coventry & Warwickshire NHS Trust •  
 Walsall Healthcare NHS Trust • Worcestershire Acute Hospitals NHS Trust



**DATE FOR DIARY!!**

**Young People Health & Wellbeing  
Framework Event  
5th June 2015**

**Venue to be confirmed**

**We know from what young people tell us that they want an integrated “young people” friendly approach, which recognises their needs and makes them feel supported.....**

**Public Health England (PHE)** in the West Midlands is committed to supporting stakeholders in developing an integrated and holistic approach to addressing the health and wellbeing needs of young people.

This one day event is designed to bring together key partners across the wider public health system including commissioners, and service providers to build on concepts of resilience and to share and take from our experiences.

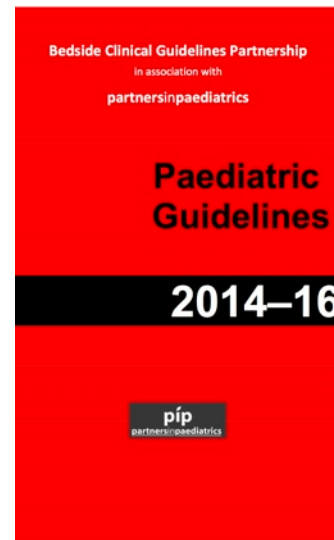
**PiP** has been asked to present at this event and will be sharing examples of good practice in working with children and young people.

**It is understood that this event is already over subscribed and there is a waiting list. However, PiP will report on the outcomes of the event in the next Newsletter.**

**PAEDIATRIC GUIDELINES**

**If you would like to be involved in the development of any of the current guidelines - or develop a new guideline please contact Naveed Mustafa:**

[Naveed.Mustfa@uhns.nhs.uk](mailto:Naveed.Mustfa@uhns.nhs.uk)



**PAEDIATRIC GUIDELINES 2014 - 2016**

**In the last Newsletter, we announced that the 6th Edition of the Guidelines would be circulated soon. Unfortunately there has been a delay in these being finalised. However, they are now being printed and will be circulated to Members shortly.**

This latest edition contains some new specialty areas and also includes the ‘Top Tips’ developed by a group of Shropshire Health Champions - devised to improve professionals’ communicating with young people.

**Progressing the development of the Guidelines:**

PiP continues to work in partnership with the Bedside Clinical Guidelines Partnership (BCGP) to develop the Paediatric Guidelines.

The Paediatric ( and Neonatal &Obstetric Clinical Guidelines) are for the use of all staff working in children’s and maternity services to ensure that parents, children, neonates and babies can expect the same quality of care wherever they receive their care, both within and outside of the West Midlands.

They are developed by guideline groups which are made up of paediatricians, consultant neonatologists, obstetricians and, midwives, librarians, network managers, nurses, parent representatives and carers, patients, pharmacists and co-ordinators.

The Clinical Lead for the BCGP is Naveed Mustafa:  
[Naveed.Mustfa@uhns.nhs.uk](mailto:Naveed.Mustfa@uhns.nhs.uk)

The Lead editor for Paediatrics is Paddy McMaster:  
[Paddy.McMaster@pat.nhs.uk](mailto:Paddy.McMaster@pat.nhs.uk)

**PiP Member Organisations**

Birmingham Children’s Hospital NHS FT • Black Country Partnership NHS FT • Burton Hospitals NHS FT • County Hospital, Stafford • Dudley CCG  
Dudley Group NHS FT East Cheshire NHS Trust • George Eliot Hospital NHS Trust • Heart of England NHS FT  
Robert Jones & Agnes Hunt Orthopaedic & District Hospital NHS FT • Shropshire Community NHS Trust • Shropshire CCG  
South Staffordshire & Shropshire Healthcare NHS FT • The Royal Wolverhampton Hospitals NHS Trust • The Shrewsbury & Telford Hospital NHS Trust  
University Hospital of North Staffordshire NHS Trust • University Hospitals Coventry & Warwickshire NHS Trust •  
Walsall Healthcare NHS Trust • Worcestershire Acute Hospitals NHS Trust





### DATE FOR DIARY!!

We are pleased to announce that this year's Annual Conference will be held on **15th October 2015.**  
Maple House, Birmingham

The main focus will be on developing integrated models of care as advocated in the Five Year Forward View.

We will also consider the health inequalities which exist in our region, and explore how we can work collectively to improve the outcomes of care for children and young people.

We are delighted that Kath Evans will be presenting and participating. Kath is the Head of Patient Experience (Maternity, Newborn, Children and Young People) at NHS England.

Kath has recently returned from a Patient Experience Conference held at the Beryl Institute in the USA - so she will be buzzing with new ideas!!

We are waiting to confirm other national and regional speakers.

### CALL TO MEMBERS!

We would like to work closely with children and young people and representatives from our member organisations - both to develop the programme and also to participate in the day.

**If you are interested in being involved in the development of this event, please contact one of the Core Group members.**

### IMPORTANT MESSAGE: Board Meeting July 15th 2015

This meeting will be held at Dudley CCG  
from 2pm to 4pm

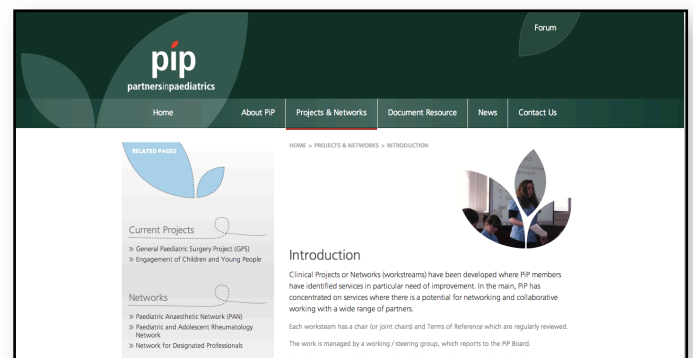
We recognise the demands on our Members' time and how difficult it is to travel to attend meetings.

We are therefore exploring the use of 'Skype' - to enable more people to 'attend' the meetings without the need to travel! Arrangements for this are underway, and more information will be sent out directly to members and put in the next newsletter.

### Have you looked at the new PiP Website ??

The new website is now up and running! If you have not had a look at the new Website yet - then please do so.

[www.partnersinpaediatrics.org](http://www.partnersinpaediatrics.org)



The aim is that the website is a 'repository' for examples of 'good practice' and that it can be used for advertising any educational events that are taking place around the region.

If you would like to include any examples of 'good practice' on the website - or advertise an event that you are organising, then please contact a member of the Core Group.

#### PIP Member Organisations

Birmingham Children's Hospital NHS FT • Black Country Partnership NHS FT • Burton Hospitals NHS FT • County Hospital, Stafford • Dudley CCG  
Dudley Group NHS FT East Cheshire NHS Trust • George Eliot Hospital NHS Trust • Heart of England NHS FT  
Robert Jones & Agnes Hunt Orthopaedic & District Hospital NHS FT • Shropshire Community NHS Trust • Shropshire CCG  
South Staffordshire & Shropshire Healthcare NHS FT • The Royal Wolverhampton Hospitals NHS Trust • The Shrewsbury & Telford Hospital NHS Trust  
University Hospital of North Staffordshire NHS Trust • University Hospitals Coventry & Warwickshire NHS Trust •  
Walsall Healthcare NHS Trust • Worcestershire Acute Hospitals NHS Trust



The PiP report for 2012 - 2014 has been distributed to all Members and a copy is also available on the Website.

For further information on any issues raised in the newsletter, please contact a member of the Core Group:

Liz Nicholson, Chair  
[liz.nicholson@sssf.nhs.uk](mailto:liz.nicholson@sssf.nhs.uk)

Tim Horsburgh, Clinical Lead  
[tim.horsburgh@btinternet.com](mailto:tim.horsburgh@btinternet.com)

Steve Cropper, Academic Advisor  
[s.a.cropper@keele.ac.uk](mailto:s.a.cropper@keele.ac.uk)

Julia Greensall, Network Development Manager  
[julia@greensall.com](mailto:julia@greensall.com)

Lesley Hines, Project Support  
[l.hines@nhs.net](mailto:l.hines@nhs.net)



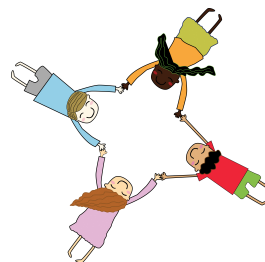
Reema Nandi - Presenting at the PAN Study Day



Delegates at the PAN Study Day

## Do you have examples of good practice to share?

*We would like to share what is happening within your individual organisation and around the Region. If you would like to include anything in future newsletters, or would like examples of 'good practice' put on the website, please contact Julia Greensall or Lesley Hines.*



Correspondence can be sent to:  
Friars Gate (3<sup>rd</sup> Floor)  
1011 Stratford Road  
Shirley, Birmingham, B90 4BN  
Office telephone number:  
**0121 746 4461**

### PiP Member Organisations

Birmingham Children's Hospital NHS FT • Black Country Partnership NHS FT • Burton Hospitals NHS FT • County Hospital, Stafford • Dudley CCG  
Dudley Group NHS FT East Cheshire NHS Trust • George Eliot Hospital NHS Trust • Heart of England NHS FT  
Robert Jones & Agnes Hunt Orthopaedic & District Hospital NHS FT • Shropshire Community NHS Trust • Shropshire CCG  
South Staffordshire & Shropshire Healthcare NHS FT • The Royal Wolverhampton Hospitals NHS Trust • The Shrewsbury & Telford Hospital NHS Trust  
University Hospital of North Staffordshire NHS Trust • University Hospitals Coventry & Warwickshire NHS Trust •  
Walsall Healthcare NHS Trust • Worcestershire Acute Hospitals NHS Trust